

HiStone

Super Box

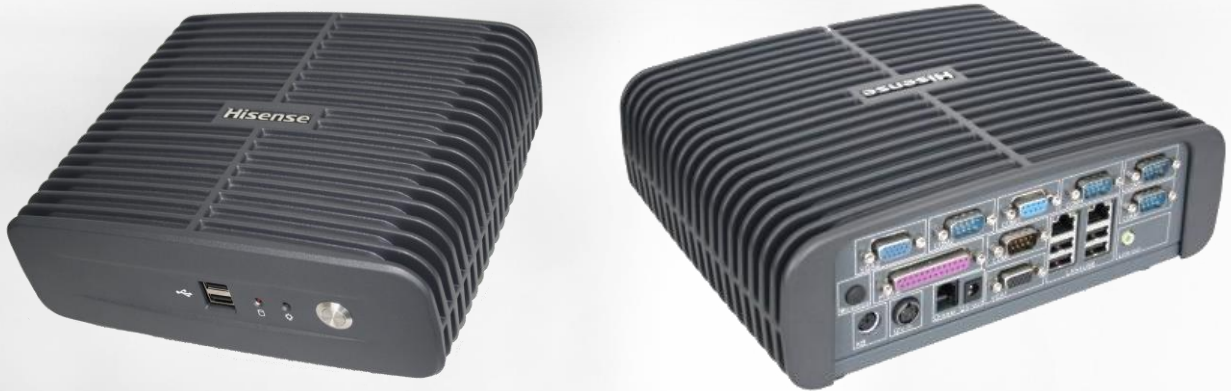


HiStone

Super Box HK500E Box PoS System (Windows & Linux)

The space-saving HiStone Super Box is a powerful, fanless point of sale system designed with flexibility and reliability in mind enabling it to be used as a front of store PoS pc to the back of office as a server.

The cleverly designed die-cast aluminium alloy housing ensures the effective dissipation of heat during operation, even in enclosed spaces. It is built to last and is virtually maintenance free thereby delivering peace of mind in information critical business environments.



Features

- ❑ Intel® Bay Trail J1900 Quad Core 2.0GHz up to 2.42GHz
- ❑ Windows 10 & Linux
- ❑ 2GB up to 8GB with SATA SSD 120GB up to 240GB
- ❑ Fanless design for silent operation
- ❑ Easy SSD removal and replacement
- ❑ Comprehensive I/O interface including USB 2.0, Serial, LAN, VGA, Display, Audio, PS/2 and Cash Drawer ports



Customizable Options

Choose from a range of peripherals to suit your retail or hospitality environment.



Choice of Touch or Non-Touch Screen



24V Dual Connector (Split Cable Power Supply adapter)



Epson TM-T20II 80mm Thermal Printer



Epson TM-M30 80mm Thermal Printer (Dice)



USB Handheld Scanner or Cordless Handheld Scanner



308mm or 410mm Wide Cash Drawer

MODEL		HK500E
Processor		Intel® Bay Trail J1900, Quad-core 2.0GHz up to 2.42GHz
Operating System		Windows 10 / Linux
Memory		SO-DIMM DDR3L 1066/1333MHz 4GB up to 8GB
Storage		SATA SSD 120GB up to 240GB
Touch Screen		Optional separate (Refer to the HiStone range of available touch screens)
Power Supply		24V 90W
Speaker		Not supported
I/O Ports	USB	6* 2.0
	Serial	6* DB9 Female head serial port Com3 & Com4 pin9 with 5V/12V jumper option
	LAN	1* RJ45 100M/1000M Gigabit
	Cash Drawer	1* 24V RJ11
	Audio	1* 3.5mm
	HDMI	Not supported
	VGA	2* VGA
	DC Output	1* 12V
	Parallel	1* Parallel
	PS/2	1* PS/2 (For keyboard)
Optional Peripherals	Wi-Fi®	Single-band b/g/n 2.4GHz
	Bluetooth	Not supported
Dimensions (WxDxH)		240 x 200 x 80 mm
Weight		2.8kg
Environment	Operating	0°C - 40°C / 10%-85% RH non-condensing
	Storage	-10°C - 50°C / 10%-90% RH non-condensing
EMC and Safety		FCC / CE / RoHS
Colour		Black

All products specifications are subject to change without notice.